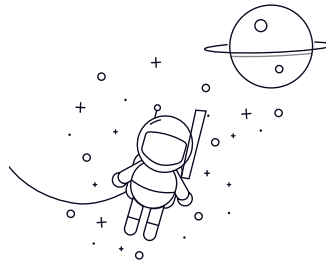


5200 Series



| select Inquiry | Bearing No. | Boundary dimensions □mm□ | | | | | Basic load ratings(kN) | | Limiting speed(rpm Mass) | |
|----------------|-------------|-----------------------------|------|-----|--------|-------------|------------------------|--------|---------------------------|----|
| | | d | D | B | rs min | Dynamic(Cr) | Static(Cor) | Grease | Oil | Kg |
| 5200 | 10 | 30 | 14.3 | 0.6 | 6.95 | 3.8 | 14000 | 19000 | 0.049 | |
| 5201 | 12 | 32 | 15.9 | 0.6 | 9.15 | 5.05 | 13000 | 17000 | 0.057 | |
| 5202 | 15 | 35 | 15.9 | 0.6 | 10 | 6.05 | 11000 | 15000 | 0.064 | |
| 5203 | 17 | 40 | 17.5 | 0.6 | 12.8 | 7.9 | 9900 | 13000 | 0.096 | |
| 5204 | 20 | 47 | 20.6 | 1 | 19 | 12.1 | 8800 | 12000 | 0.153 | |
| 5205 | 25 | 52 | 20.6 | 1 | 20.6 | 14.3 | 7300 | 9800 | 0.175 | |
| 5206 | 30 | 62 | 23.8 | 1 | 28.5 | 20.4 | 6300 | 8400 | 0.286 | |
| 5207 | 35 | 72 | 27 | 1.1 | 38 | 27.8 | 5500 | 7400 | 0.436 | |
| 5208 | 40 | 80 | 30.2 | 1.1 | 42.5 | 32.5 | 4900 | 6600 | 0.59 | |
| 5209 | 45 | 85 | 30.2 | 1.1 | 48 | 37 | 4400 | 5900 | 0.64 | |
| 5210 | 50 | 90 | 30.2 | 1.5 | 51 | 42 | 4000 | 5300 | 0.689 | |
| 5211 | 55 | 100 | 33.3 | 1.5 | 63 | 53 | 3600 | 4900 | 0.986 | |
| 5212 | 60 | 110 | 36.5 | 1.5 | 71.5 | 58.5 | 3400 | 4500 | 1.27 | |
| 5213 | 65 | 120 | 38.1 | 1.5 | 83.5 | 72.5 | 3100 | 4200 | 1.57 | |
| 5214 | 70 | 125 | 39.7 | 1.5 | 90.5 | 79.5 | 2900 | 3900 | 1.8 | |
| 5215 | 75 | 130 | 41.3 | 1.5 | 90 | 80.5 | 2700 | 3600 | 1.9 | |
| 5216 | 80 | 140 | 44.4 | 2 | 106 | 95.5 | 2500 | 3400 | 2.39 | |
| 5217 | 85 | 150 | 49.2 | 2 | 112 | 106 | 2400 | 3200 | 3.06 | |
| 5218 | 90 | 160 | 52.4 | 2 | 140 | 129 | 2200 | 3000 | 3.73 | |