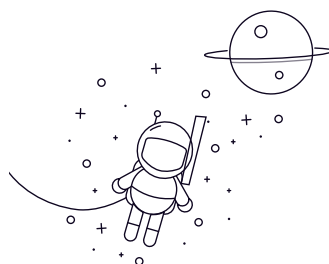


7200C Series



select	Inquiry	Bearing No.	Boundary dimensions [mm]			Basic load ratings(kN)		Limiting speed(rpm)	Mass Kg
			d	D	B	Dynamic(Cr)	Static(Cor)	Grease Oil	
7200C	10	30	9	5.5	2.8	22000	28000	0.032	
7201C	12	32	10	7.9	3.8	20000	25000	0.037	
7202C	15	35	11	9.2	4.9	17000	22000	0.045	
7203C	17	40	12	10.8	5.8	15000	20000	0.062	
7204C	20	47	14	14.5	8.1	13000	18000	0.1	
7205C	25	52	15	16.5	10	11000	16000	0.12	
7206C	30	62	16	23	14.7	9000	13000	0.19	
7207C	35	72	17	30.3	20	8000	11000	0.28	
7208C	40	80	18	38.4	26.3	7500	10000	0.37	
7209C	45	85	19	40.4	29.3	6700	9000	0.41	
7210C	50	90	20	42.8	31.3	6300	8500	0.46	
7211C	55	100	21	53.2	39.9	5600	7000	0.61	
7212C	60	110	22	61	48.2	5300	7000	0.8	
7213C	65	120	23	69.8	54.4	4800	6300	1	
7214C	70	125	24	72.8	59.7	4500	5800	1.1	
7215C	75	130	25	79.2	65.6	4300	5600	1.2	
7216C	80	140	26	92.5	66.2	4000	5300	1.45	
7217C	85	150	28	99.7	84.6	3800	5000	1.8	
7218C	90	160	30	128	111.7	3600	4800	2.25	
7219C	95	170	32	134.6	112.2	3400	4500	2.7	

7200C Series

7220C	100	180	34	149.1	125.4	3200	4300	3.25
7221C	105	190	36	166.6	138.6	3000	4000	3.85
7222C	110	200	38	184.7	154.8	2800	3800	4.55
7224C	120	215	40	203.1	178.4	2400	3400	5.4
7226C	130	230	40	206.6	209.2	2000	3000	6.45