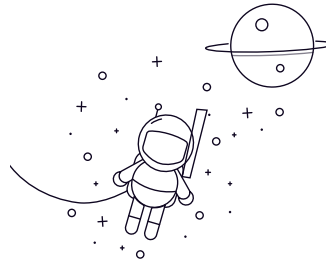


UCF Series



select	Inquiry	Unit No.	Bearing No.	Housing No.	Shaft Dia		Boundary dimensions(mm)							Bolt Size	Mass(Kg)
					in.	mm	a	e	i	g	l	s	z		
UCF201-8	UC201-8	F204	1/2	-	86	63.5	15	11	25.4	12	33.3	31	12.7	3/8	0.7
UCF202-10	UC202-10	F204	5/8	-	86	63.5	15	11	25.4	12	33.3	31	12.7	3/8	0.7
UCF204	UC204	F204	-	20	86	63.5	15	11	25.4	12	33.3	31	12.7	M10	0.7
UCF204-12	UC204-12	F204	3/4	-	86	63.5	15	11	25.4	12	33.3	31	12.7	3/8	0.7
UCF205	UC205	F205	-	25	95	70	16	13	27	12	35.7	34	14.3	M10	0.8
UCF205-14	UC205-14	F205	7/8	-	95	70	16	13	27	12	35.7	34	14.3	3/8	0.8
UCF205-15	UC205-15	F205	15/16	-	95	70	16	13	27	12	35.7	34	14.3	3/8	0.8
UCF205-16	UC205-16	F205	1	-	95	70	16	13	27	12	35.7	34	14.3	3/8	0.8
UCF206	UC206	F206	-	30	108	83	18	13	31	12	40.2	38.1	15.9	M10	1
UCF206-17	UC206-17	F206	1-1/16	-	108	83	18	13	31	12	40.2	38.1	15.9	3/8	1
UCF206-18	UC206-18	F206	1-1/8	-	108	83	18	13	31	12	40.2	38.1	15.9	3/8	1
UCF206-19	UC206-19	F206	1-3/16	-	108	83	18	13	31	12	40.2	38.1	15.9	3/8	1
UCF206-20	UC206-20	F206	1-1/4	-	108	83	18	13	31	12	40.2	38.1	15.9	3/8	1
UCF207	UC207	F207	-	35	117	92	19	15	34	14	44.4	42.9	17.5	M12	1.4
UCF207-20	UC207-20	F207	1-1/4	-	117	92	19	15	34	14	44.4	42.9	17.5	7/16	1.4
UCF207-21	UC207-21	F207	1-5/16	-	117	92	19	15	34	14	44.4	42.9	17.5	7/16	1.4
UCF207-22	UC207-22	F207	1-3/8	-	117	92	19	15	34	14	44.4	42.9	17.5	7/16	1.4
UCF207-23	UC207-23	F207	1-7/16	-	117	92	19	15	34	14	44.4	42.9	17.5	7/16	1.4
UCF208	UC208	F208	-	40	130	102	21	15	36	16	51.2	49.2	19	M14	1.8
UCF208-24	UC208-24	F208	1-1/2	-	130	102	21	15	36	16	51.2	49.2	19	1/2	1.8
UCF208-25	UC208-25	F208	1-9/16	-	130	102	21	15	36	16	51.2	49.2	19	1/2	1.8
UCF209	UC209	F209	-	45	137	105	22	16	38	16	52.2	49.2	19	M14	2.2
UCF209-26	UC209-26	F209	1-5/8	-	137	105	22	16	38	16	52.2	49.2	19	1/2	2.2
UCF209-27	UC209-27	F209	1-11/16	-	137	105	22	16	38	16	52.2	49.2	19	1/2	2.2
UCF209-28	UC209-28	F209	1-3/4	-	137	105	22	16	38	16	52.2	49.2	19	1/2	2.2
UCF210	UC210	F210	-	50	143	111	22	16	40	16	54.6	51.6	19	M14	2.4
UCF210-30	UC210-30	F210	1-7/8	-	143	111	22	16	40	16	54.6	51.6	19	1/2	2.4
UCF210-31	UC210-31	F210	1-15/16	-	143	111	22	16	40	16	54.6	51.6	19	1/2	2.4
UCF210-32	UC210-32	F210	2	-	143	111	22	16	40	16	54.6	51.6	19	1/2	2.4

UCF Series

UCF211	UC211	F211	-	55	162	130	25	18	43	19	58.4	55.6	22.2	M16	3.6
--------	-------	------	---	----	-----	-----	----	----	----	----	------	------	------	-----	-----