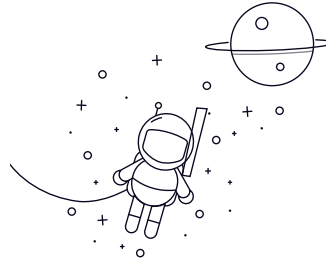


Round Bore And Cylindrical O.D.



select	Inquiry	Bearing Designation	Dimension [mm]				Basic load ratings (kN) Cr	Weight (Kg)
			d	D	Bi	Be		
W208PP7	1.118	80	1.189	0.709	26200	0.65		
W210PP2	1.938	90	1.189	1.189	31500	0.77		
W211PP2	2.188	100	1.311	1.311	39100	1.06		
GW211PP2	2.188	100	1.311	1.311	39100	1.06		
W208PP10	1.5005	80	1.689	0.827	26200	0.68		
W208PP4	1.118	80	1.189	1.189	26200	0.76		