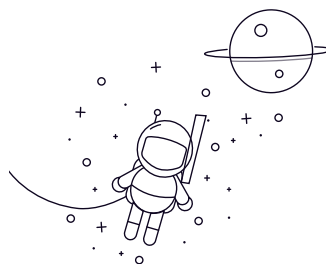


## Square Bore And Spherical O.D



select	Inquiry	Bearing Designation	Dimension [mm]				Basic load ratings (kN) Cr	Weight (Kg)
			d	D	Bi	Be		
	1-1/8	3.1496	1.437	0.708	26200	0.67		
	1-1/8	3.1496	1.437	1.189	26200	0.75		
	1-1/4	3.3464	1.437	1.189	29200	0.79		
	1-1/4	3.3464	1.437	0.748	29200	0.75		
	1-1/8	3.5433	1.189	1.189	31500	0.96		
	1-1/2	3.937	1.75	0.984	39100	1.02		
	1-1/2	3.937	1.311	1.311	39100	1.21		
	1-1/2	4.125	1.75	1.437	39100	1.86		
	7/8	3.428	1.437	1.189	26200	0.93		
	1-1/8	3.428	1.437	1.189	26200	0.85		
	7/8	3.1496	1.437	0.708	26200	0.73		
	7/8	3.4385	1.437	1.189	26200	0.93		
	1-1/8	3.4385	1.437	1.189	26200	0.85		
	1-1/8	3.1496	1.437	0.708	26200	0.67		
	1-1/8	3.1496	1.437	1.189	26200	0.75		
	1	3.1496	1.437	1.189	26200	0.79		
	1-1/4	3.3464	1.437	1.189	29200	0.79		
	1-1/4	3.4380	1.437	1.189	29200	0.84		
	1-1/4	3.3464	1.437	0.748	29200	0.75		
	1-1/8	3.5433	1.189	1.189	31500	0.96		

Square Bore And Spherical O.D

---

W210PPB6	1-1/8	3.5433	1.437	1.189	31500	1.02
W211PPB3	1-1/2	3.937	1.311	1.311	39100	1.21
W211PPB6	1-1/2	4.125	1.75	1.437	39100	1.86