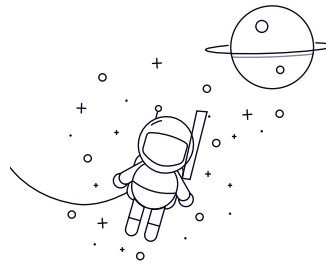


NU1000 Series



| select | Inquiry | Designation | Principal Dimensions(mm) | | | | | | Basic Load Ratings(KN) | | Limited Speed(rpm) | Weight (kg) |
|--------|---------|-------------|--------------------------|-----|-----|------|------|--------|------------------------|-------------|--------------------|-------------|
| | | | d | D | B | rs | min | rs1min | Dynamic(Cr) | Static(Cor) | Grease | |
| NU1005 | 25 | 47 | 12 | 0.6 | 0.3 | 15.1 | 14.1 | 16000 | 19000 | 0.092 | | |
| NU1006 | 30 | 55 | 13 | 1 | 0.6 | 19.7 | 19.6 | 14000 | 16000 | 0.13 | | |
| NU1007 | 35 | 62 | 14 | 1 | 0.6 | 22.6 | 23.2 | 12000 | 15000 | 0.179 | | |
| NU1008 | 40 | 68 | 15 | 1 | 0.6 | 27.3 | 29 | 11000 | 13000 | 0.22 | | |
| NU1009 | 45 | 75 | 16 | 1 | 0.6 | 31 | 34 | 9900 | 12000 | 0.28 | | |
| NU1010 | 50 | 80 | 16 | 1 | 0.6 | 32 | 36 | 8900 | 11000 | 0.295 | | |
| NU1011 | 55 | 90 | 18 | 1.1 | 1 | 37.5 | 44 | 8200 | 9700 | 0.442 | | |
| NU1012 | 60 | 95 | 18 | 1.1 | 1 | 40 | 48.5 | 7500 | 8800 | 0.474 | | |
| NU1013 | 65 | 100 | 18 | 1.1 | 1 | 41 | 51 | 7000 | 8200 | 0.485 | | |
| NU1014 | 70 | 110 | 20 | 1.1 | 1 | 58.5 | 70.5 | 6500 | 7600 | 0.699 | | |
| NU1015 | 75 | 115 | 20 | 1.1 | 1 | 60 | 74.5 | 6100 | 7100 | 0.738 | | |
| NU1016 | 80 | 125 | 22 | 1.1 | 1 | 72.5 | 90.5 | 5700 | 6700 | 0.98 | | |
| NU1017 | 85 | 130 | 22 | 1.1 | 1 | 74.5 | 95.5 | 5400 | 6300 | 1.03 | | |
| NU1018 | 90 | 140 | 24 | 1.5 | 1.1 | 88 | 114 | 5100 | 5900 | 1.33 | | |
| NU1019 | 95 | 145 | 24 | 1.5 | 1.1 | 90.5 | 120 | 4800 | 5600 | 1.4 | | |
| NU1020 | 100 | 150 | 24 | 1.5 | 1.1 | 93 | 126 | 4600 | 5400 | 1.45 | | |
| NU1021 | 105 | 160 | 26 | 2 | 1.1 | 105 | 142 | 4300 | 5100 | 1.84 | | |
| NU1022 | 110 | 170 | 28 | 2 | 1.1 | 131 | 174 | 4100 | 4800 | 2.33 | | |
| NU1024 | 120 | 180 | 28 | 2 | 1.1 | 139 | 191 | 3800 | 4400 | 2.44 | | |
| NU1026 | 130 | 200 | 33 | 2 | 1.1 | 172 | 238 | 3400 | 4000 | 3.69 | | |
| NU1028 | 140 | 210 | 33 | 2 | 1.1 | 176 | 250 | 3200 | 3800 | 4.05 | | |
| NU1030 | 150 | 225 | 35 | 2.1 | 1.5 | 202 | 294 | 3000 | 3500 | 4.77 | | |