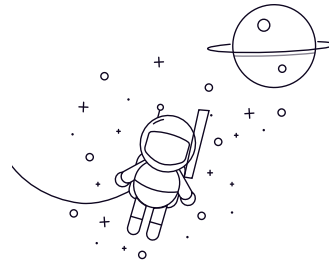


UCP Series



select	Inquiry	Type	Dimensions[mm]											Bolt Dimensions	Tipo de rodamiento	House Type	With Shield	With Shield	t	Zs	Wc	Zc	Weight (With House) (Kg)	Weight(With Shield) (Kg)	
			d	H	L	J	A	N	N1	H1	W	L1	B												S
UCP203	17	30.2	127	96	38	12	16	14	62	42	27.4	11.5	M10	UC203	P203									0.6	-
UCP204	20	33.3	127	96	38	12	16	14	65	42	31	12.7	M10	UC204	P204	S(SM)-UCP204	C(CM)-UCP204	2	44.5	70	62	0.7	0.7		
UCP205	25	36.5	140	105	38	12	19	16	71	42	34.1	14.3	M10	UC205	P205	S(SM)-UCP205	C(CM)-UCP205	2	48	76	70	0.8	0.9		
UCP206	30	42.9	165	121	48	14	21	18	84	54	38.1	15.9	M12	UC206	P206	S(SM)-UCP206	C(CM)-UCP206	2	53	88	75	1.3	1.4		
UCP207	35	47.6	167	126	48	14	21	19	93	54	42.9	17.5	M12	UC207	P207	S(SM)-UCP207	C(CM)-UCP207	3	59.5	99	80	1.6	1.7		
UCP208	40	49.2	184	136	54	14	21	19	98	54	49.2	19	M12	UC208	P208	S(SM)-UCP208	C(CM)-UCP208	3	69	105	90	1.9	2.2		
UCP209	45	54	190	146	54	14	21	20	106	60	49.2	19	M12	UC209	P209	S(SM)-UCP209	C(CM)-UCP209	3	69	113	95	2.2	2.4		
UCP210	50	57.2	206	159	60	18	23	22	114	65	51.6	19	M16	UC210	P210	S(SM)-UCP210	C(CM)-UCP210	3	74.5	119	100	2.6	2.8		
UCP211	55	63.5	219	172	60	18	23	22	125	65	55.6	22.2	M16	UC211	P211	S(SM)-UCP211	C(CM)-UCP211	4	76	130	100	3.3	3.6		
UCP212	60	69.9	241	186	70	18	23	25	138	70	65.1	25.4	M16	UC212	P212	S(SM)-UCP212	C(CM)-UCP212	4	89	143	115	4.6	5		
UCP213	65	76.2	265	203	70	23	28	27	150	77	65.1	25.4	M20	UC213	P213	S(SM)-UCP213	C(CM)-UCP213	4	89	155	120	5.9	6.3		
UCP214	70	79.4	266	210	72	23	28	27	157	77	74.6	30.2	M20	UC214	P214	-	C(CM)-UCP214	4	162	135	6.6	9.3	-		
UCP215	75	82.6	274	217	74	23	28	28	162	80	77.8	33.3	M20	UC215	P215	-	C(CM)-UCP215	4	168	135	7.4	11	-		
UCP216	80	88.9	292	232	78	23	28	30	174	85	82.6	33.3	M20	UC216	P216	-	C(CM)-UCP216	4	181	145	9	13	-		
UCP217	85	95.2	310	247	83	23	28	32	187	85	85.7	34.1	M20	UC217	P217	-	C(CM)-UCP217	5	191	155	11	15	-		
UCP218	90	101.6	327	262	88	27	34	33	200	90	96	39.7	M24	UC218	P218	-	C(CM)-UCP218	5	204	165	13	18	-		
UCP305	25	45	175	132	45	17	20	15	85	54	38	15	M14	UC305	P305	-	C(CM)-UCP305	2	91	80	1.4	2	2		
UCP306	30	50	180	140	50	17	20	18	95	54	43	17	M14	UC306	P306	-	C(CM)-UCP306	2	105	85	1.8	2.7	-		
UCP307	35	55	210	160	56	17	25	20	106	60	48	19	M14	UC307	P307	-	C(CM)-UCP307	3	115	95	2.8	3.5	-		
UCP308	40	60	220	170	60	17	27	22	116	60	52	19	M14	UC308	P308	-	C(CM)-UCP308	3	125	105	3	4.5	-		
UCP309	45	67	245	190	67	20	30	24	129	65	57	22	M16	UC309	P309	-	C(CM)-UCP309	3	140	110	4.1	6.1	-		
UCP310	50	75	275	212	75	20	35	27	143	75	61	22	M16	UC310	P310	-	C(CM)-UCP310	3	156	120	5.8	8.4	-		
UCP311	55	80	310	236	80	20	38	30	154	85	66	25	M16	UC311	P311	-	C(CM)-UCP311	4	166	125	7.4	9.7	-		
UCP312	60	85	330	250	85	25	38	32	165	95	71	26	M20	UC312	P312	-	C(CM)-UCP312	4	179	135	9.4	12	-		
UCP313	65	90	340	260	90	25	38	33	176	105	75	30	M20	UC313	P313	-	C(CM)-UCP313	4	190	140	10	15	-		
UCP314	70	95	360	280	90	27	40	35	187	105	78	33	M22	UC314	P314	-	C(CM)-UCP314	4	200	140	12	16	-		
UCP315	75	100	380	290	100	27	40	35	198	110	82	32	M22	UC315	P315	-	C(CM)-UCP315	4	210	150	14	20	-		
UCP316	80	106	400	300	110	27	40	40	210	110	86	34	M22	UC316	P316	-	C(CM)-UCP316	4	221	155	18	23	-		
UCP317	85	112	420	320	110	33	45	40	220	120	96	40	M27	UC317	P317	-	C(CM)-UCP317	5	235	170	20	27	-		
UCP318	90	118	430	330	110	33	45	45	235	120	96	40	M27	UC318	P318	-	C(CM)-UCP318	5	246	170	24	30	-		